

Module 5 LO10

Thorax

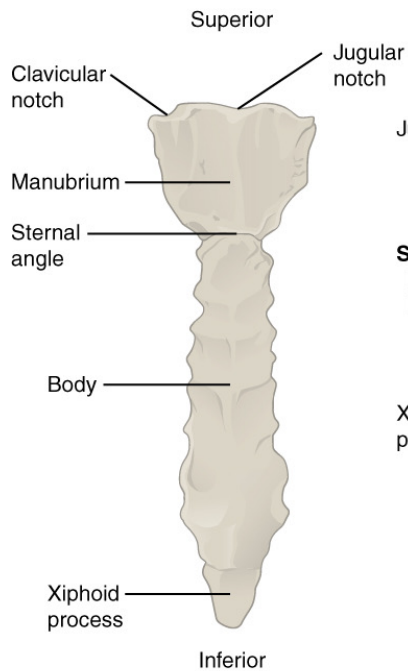
Dr. Lisa Brinn

lbrinn@fiu.edu

10. Thorax

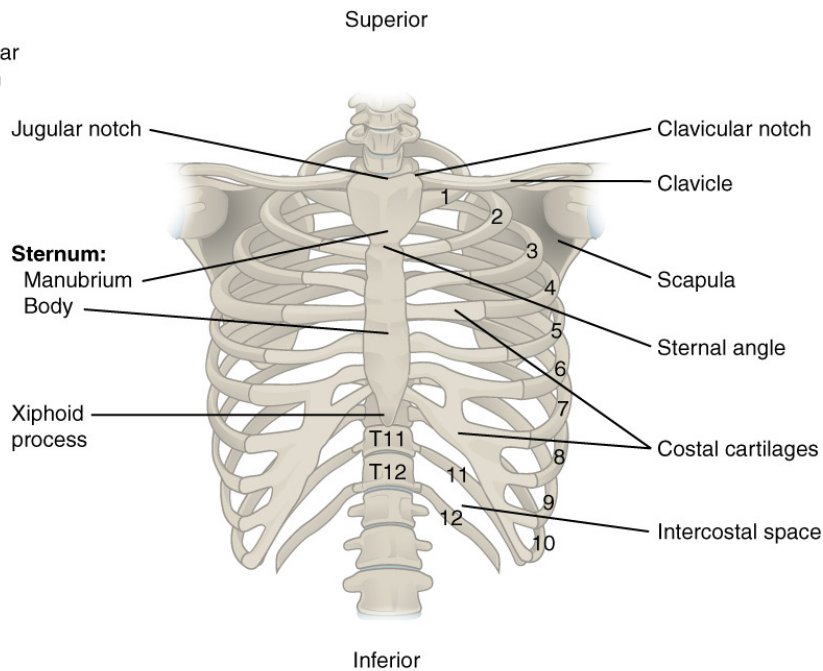
- The skeletal part of the thorax is the thoracic cage
 - Sternum
 - Ribs

Thoracic Bones: Sternum



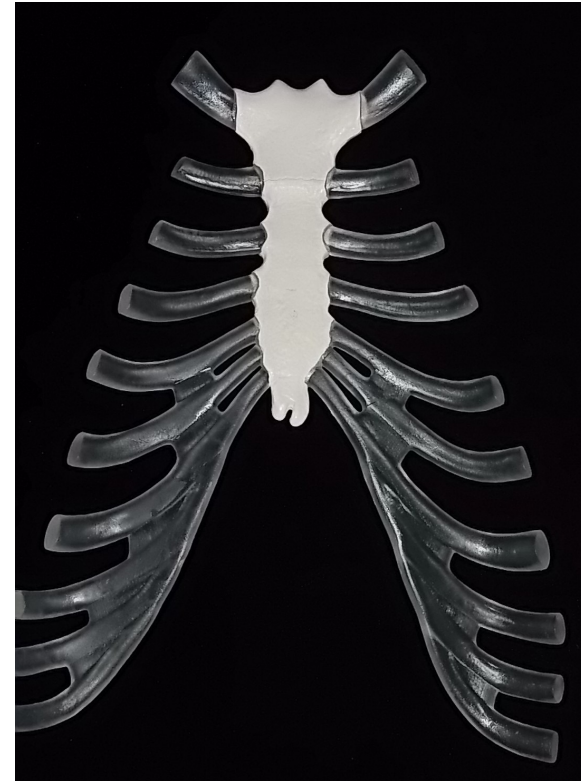
(a) Anterior view of sternum

ANTERIOR



(b) Anterior view of skeleton of thorax

ANTERIOR



Thoracic Bones: Types of Ribs

- ~~True ribs~~ – vertebrosteral ribs (1-7)
- ~~False ribs~~ – vertebrochondral ribs (8-10)
- ~~Floating ribs~~ – vertebral ribs (11-12)

